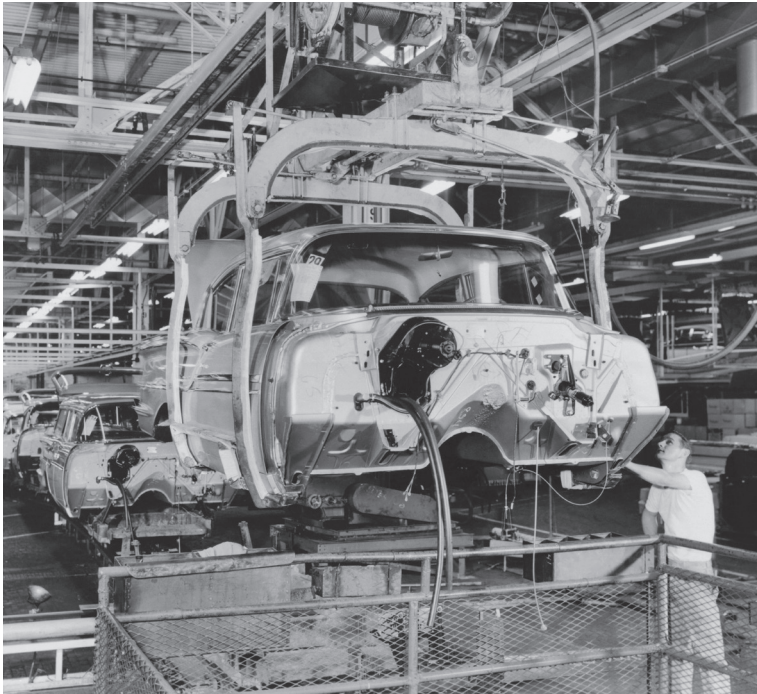


Just the FACTS

How Corporations Knew the Dangers of Asbestos and Put Thousands of Americans at Risk



For more than a century, American asbestos workers have been suffering and dying needlessly. This tragedy grows even more sinister in light of one simple, indisputable fact: **Companies and their insurers knew the dangers of asbestos.** And, for decades, they chose to conceal this information from those workers and their families.

Fortunately, now, there is greater public awareness of the health crisis caused by asbestos use and exposure. Courts are finding asbestos companies guilty of exposing their employees to

this harmful – often deadly – substance, and of doing so with complete knowledge of its effects. This legal attention means that you can do what thousands of other workers couldn't: **Take a stand against the corporations that have knowingly wronged you and your family.**

ACROSS THE BOARD

A joint report issued by the CDC and the National Cancer Institute states that 3,000 cases of mesothelioma are diagnosed every year – that's basically 8 cases every day. Asbestos exposure is the only known cause of mesothelioma – a deadly form of cancer.

American workers and their families weren't misled by just one company, or even one industry. The list of offenders is a veritable Who's Who of major corporations: Exxon, Dow (Union Carbide), DuPont, Bendix (now Honeywell), Travelers Co., Metropolitan Life, Halliburton, National Gypsum, Owens-Corning, General Electric, Ford, General Motors, as well as Johns-Manville, W.R. Grace and many others.



SOKOLOVE LAW



FROM THE BEGINNING

For more than a century, physicians have been aware of diseases caused by asbestos exposure. In the early 1900s, a London doctor performed an autopsy on a young asbestos laborer who had died in 1899, later offering his testimony on the death in connection with an industrial disease compensation hearing. **His conclusion: the inhalation of asbestos fibers contributed to the worker's death, and possibly caused it outright.**

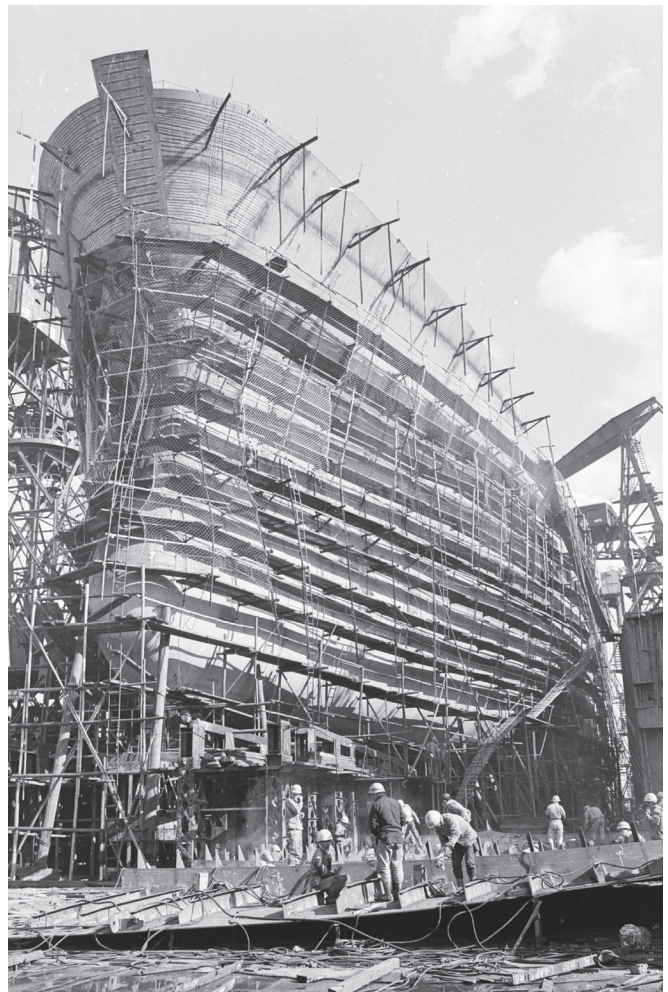
In 1927, the U.S. saw its first documented claim for worker's compensation because of asbestos disease. Three years later, one of the country's leading asbestos producing companies, Johns-Manville, produced a report about the potentially fatal hazards of asbestos exposure. The document was not intended to reach the public. By 1933, Metropolitan Life doctors determined that some 29% of workers in a Johns-Manville plant were victims of asbestosis – a chronic lung disorder, caused solely by asbestos exposure. Only a year after that, Aetna Insurance Company observed that asbestosis was “incurable and usually results in total permanent disability followed by death.”

CONTINUED AWARENESS

In the early 1940s, Lewis H. Brown, then president of Johns-Manville, criticized leaders of another asbestos company as “a bunch of fools for notifying employees who had asbestosis.” When a fellow manager

demanded, “Do you mean to tell me you would let them work until they dropped dead?” Brown reportedly replied, “Yes. We save a lot of money that way.” (Source: Testimony of Charles H. Roemer, *Johns-Manville vs. USA*, 1984.)

Throughout the next several decades, corporations proved fully aware of the harmful, and potentially fatal, effects of working with asbestos, but continued to expose millions of workers without offering any health protections. There have been numerous internal documents, as well as anecdotal accounts, that indicate an industry-





wide cover-up of asbestos-related diseases and cancers. One, written by a physician hired by Philip Carey Manufacturing in 1964, insisted that “[t]here is an irrefutable association between asbestos and cancer... There should be no delusion that the problem will disappear, or that the consumer or working population will not become aware of the problem and the compensation and legal liability involved.” The doctor was quickly fired after the release of his report.

SETTLING THE SCORE

Because asbestos diseases can take decades to manifest after initial exposure, companies continued to allow their employees to work around the substance, even though they were aware that workers’ continued exposure could prove fatal. Often, those employees continued to work without any awareness of the danger to which they were exposed daily.

The efforts of the corporations to conceal this information from employees and from the public at large constituted a large-scale cover-up scheme, designed to prevent compensation payouts. Companies chose to continue using asbestos despite the known toxicity rather than incur extra costs from changing procedures.

In short, these companies recklessly disregarded their employees’ safety. **It’s time for them to accept the consequences for their irresponsible, immoral and illegal practices.** Forcing them to

compensate victims will help them learn they can no longer save money by turning a blind eye to important safety warnings and information.

The vast impact of mesothelioma and other deadly asbestos-related diseases on workers can be directly attributed to the manufacturers and insurance companies that kept information from employees and their families. It is these manufacturers and insurance companies that should be held accountable and should pay compensation to all the workers victimized by their decision to put profits over people.

Throughout the next several decades, corporations proved fully aware of the harmful, and potentially fatal, effects of working with asbestos, but continued to expose millions of workers without offering any health protections.

There have been numerous internal documents, as well as anecdotal accounts, that indicate an industry-wide cover-up of asbestos-related diseases and cancers.



Medically SPEAKING:

Types of asbestos-related disease

Asbestos exposure can lead to a number of serious – even fatal – illnesses, including:

MESOTHELIOMA – an incurable cancer that can present in three forms:

- **PLEURAL** – mesothelioma located within the protective lining that covers the lungs and chest wall (pleura). Pleural mesothelioma is aggressive and has a poor prognosis. The most common form of the disease, it accounts for 80-85% of all mesothelioma cases.
- **PERITONEAL** – impacts the lining of the abdominal organs (peritoneum). The second most common form of the disease, accounting for 15-20% of mesothelioma cases.
- **PERICARDIAL** – mesothelioma tumors form in the protective sac that covers the heart organ (pericardium). The rarest form of the disease, pericardial mesothelioma accounts for less than 1% of all known mesothelioma cases.

ASBESTOS-RELATED LUNG CANCER – abnormal growth in the cells of the lung that can form tumors and spread into other areas of the body. Many people believe cigarettes are the sole cause of lung cancer, however, even if someone smoked, asbestos exposure may still have contributed to their disease. Those who smoked in combination with exposure to asbestos are 50-84 times more likely to develop lung cancer than the general population. Other cancers linked to asbestos include, colon cancer, esophageal cancer, intestinal cancer, rectal cancer and stomach cancer.

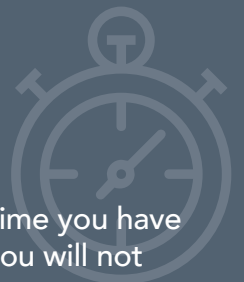
ASBESTOSIS – a chronic lung disorder, caused solely by asbestos exposure that can cause shortness of breath, coughing and permanent lung damage.

FREE CONSULTATION

It costs nothing to talk to us and to find out if you may be eligible for compensation. We only get paid if you receive money for your claim.

An estimated \$30 Billion has been set aside to pay out claims to mesothelioma victims and their families.

DON'T LET TIME RUN OUT



Don't wait. State laws limit the time you have to file a claim. If time runs out, you will not be able to file a claim, ever.

Call today for your FREE legal consultation.





YOU'VE GOT QUESTIONS. Sokolove Law has answers.

To learn more, contact one of our
Case Managers today at 866-438-3944

1. What is mesothelioma?

Mesothelioma is a rare and deadly form of cancer directly linked to asbestos exposure. Asbestos was widely used in a variety of products by manufacturers and builders through the 1970's. Symptoms can take as long as 20-50 years to appear.

2. How do you figure out how I was exposed to asbestos?

Based on your work history and the historical data collected by our mesothelioma lawyers over the past 30+ years, we are often able to link asbestos exposure to one or more asbestos containing products.

Our attorneys thoroughly investigate and can isolate the companies that produced these dangerous products.

3. What are the most common sources of asbestos exposure?

Occupational exposure to asbestos is one of the most common causes of mesothelioma and other asbestos-related diseases. The majority of people who become ill from asbestos have been exposed on a regular basis, during the course of their employment. In addition, asbestos was used in a variety of products throughout all branches of the U.S. military. Approximately 33% of mesothelioma cases have been shown to involve U.S. Navy

or shipyard exposures. Certain trades and occupations are at greater risk of exposure including:

- Assembly Line Workers
- Automotive Workers/Repair Men
- Boilermakers
- Construction Workers
- Demolition Workers
- Electricians
- Firemen
- HVAC Technicians
- Insulators
- Mechanics
- Pipefitters
- Plant Workers and Technicians
- Plumbers
- Roofers
- Ship Builders

4. Why are asbestos companies responsible?

We have obtained evidence that demonstrates that many companies knew the dangers of asbestos but continued using it in their products; putting profits ahead of people. Mesothelioma claims are placed against the manufacturers of asbestos containing products, not the U.S. military or U.S. government.

Our attorneys thoroughly investigate and can

continued >



YOU'VE GOT QUESTIONS *continued...*

isolate the companies that produced these dangerous products.

5. Who can file an asbestos or mesothelioma lawsuit?

Mesothelioma victims or immediate family members on their behalf may be eligible to receive compensation from the manufacturers of dangerous asbestos products that caused the disease. Even if your loved one is deceased, as a family member, you may be able to file a claim.

6. Are there time limits to file a mesothelioma lawsuit?

There are strict limits on the time you have to file a claim. Different states have different laws. If the time runs out, you will not be able to file a claim, ever. Contact us to determine if you can pursue a claim.

7. Should I wait for my treatment to be done before I move forward?

The information you possess regarding your exposure, including names, dates, and locations, needs to be documented promptly. Considerable research and follow-up is needed for the attorneys to prepare your case. The earlier action is taken, the better. Our attorneys are experienced in mesothelioma-related personal injury cases and are very aware of the physical and emotional stresses of the disease and treatments. They will be sensitive and thoughtful in their work, including scheduling meetings, phone conversations, and so on.

8. Will this impact my VA benefits?

Filing an asbestos claim does not impact your VA benefits. As a veteran, you may still seek assistance from the U.S. Department of Veterans Affairs. In addition to filing a mesothelioma lawsuit against the product manufacturer responsible for asbestos exposure, veterans who develop mesothelioma are able to seek disability compensation and healthcare coverage through the VA, for their service-related exposure.

9. Where does the compensation come from – who actually pays?

Compensation for mesothelioma victims usually comes from the companies that manufactured, sold, installed and/or utilized asbestos-containing materials, such as manufacturers, property owners, retailers, distributors, and contractors. For many companies no longer in business, special court-ordered trusts – estimated at over \$30 Billion, have been set up to provide money for mesothelioma victims and their families. These funds may help cover unpaid medical bills and provide financial security.

10. How do I learn more about my legal rights?

The best way to learn about your legal rights is to talk to an attorney. Contact us today for a FREE confidential legal consultation. Our legal staff can be a great source of relief and support for you and your family.

Your Next STEPS:

- 1** Contact us to get started at 866-438-3944 or www.SokoloveLaw.com
- 2** We'll listen to you and work to determine if you have a valid claim
- 3** If you qualify during the initial phone call, we'll come to you
We'll meet you at a location of your choosing – at NO COST to you. We can be there fast, often the next day, to answer any questions you have and to walk you through the claims process.
- 4** Our team does the work for you
After our initial visit, you'll work with an attorney who handles claims in your state. Our team will help prepare and submit the required documents to file your claim. Many of our mesothelioma clients never leave their home to receive compensation.

Remember... it costs nothing to talk to us and to find out if you may be eligible for compensation. We only get paid if you receive money for your claim.



INFORMATION ON MESOTHELIOMA FOR VETERANS

In addition to the benefits earned by U.S. Veterans through their service, Veterans have a right to hold responsible the companies that produced and sold asbestos-containing materials to the military. **Filing an asbestos legal claim does not impact VA benefits.**

There is a significant link between Veterans and mesothelioma – this is because in addition to asbestos exposure in the military, many people sought jobs related to trade skills learned during their service; becoming mechanics electricians, plumbers, construction workers, and other occupations thereby adding long term asbestos exposure and increasing the risk of illness.

42% of all Sokolove Law mesothelioma cases are U.S. Veterans – representing nearly every state in the U.S. We represent asbestos victims from all branches of the military and we have

continued >



INFORMATION ON MESOTHELIOMA FOR VETERANS *continued...*

helped people in all 50 states get the legal support they need. The U.S. Navy was most impacted. Nearly every naval vessel built between 1930 and the late 1970's used construction materials containing asbestos. In fact, approximately 1/3rd of mesothelioma cases have been shown to involve U.S. Navy or shipyard exposures.

Veterans Have 2 Paths to Compensation for Asbestos Exposure

PATH 1: The United States Department of Veteran Affairs may accept mesothelioma and asbestosis claims if the asbestos exposure

was service-related. Veterans should seek out a Service Officer to help navigate service-related benefits and help ensure a successful outcome when filing a claim.

PATH 2: Veterans or immediate family members can also file a separate mesothelioma lawsuit directly against the manufacturers of asbestos-containing products – not the U.S. government. These manufacturers, in some cases, supplied these deadly products to the military. Filing an asbestos legal claim does not impact VA benefits and often these rights can be enforced without ever having to go to court.

Have you or a loved one been diagnosed with mesothelioma? SOKOLOVE LAW IS HERE TO FIGHT FOR YOU.



- Our asbestos team has recovered over \$3.6 Billion in mesothelioma settlements
- 98% of mesothelioma victims who meet with Sokolove Law, choose Sokolove Law
- We have offices nationwide and have helped people in all 50 states

DON'T WAIT. State laws limit the time you have to file a claim. If time runs out, you will not be able to file a claim, ever.

Call today for your FREE Consultation.

866-438-3944

www.SokoloveLaw.com

Sokolove Law, LLC, 1330 Boylston Street, Suite 400, Chestnut Hill, MA 02467. Ricky LeBlanc admitted in MA only. The choice of a lawyer is an important decision that should not be based solely upon advertisements. While this firm maintains joint responsibility, most cases of this type are referred to other attorneys for principal responsibility. Prior results do not guarantee a similar outcome. Consult your physician before any medical decision.

© 2018 Sokolove Law, LLC



SOKOLOVE LAW